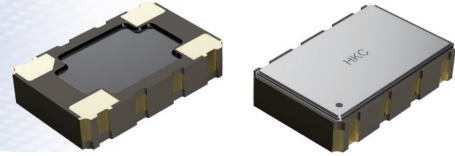




## 5032 Ceramic SMD TCXO 5032TC Series

Model T3

4 PADS 5.0 x 3.2



**Frequency Range :** 6.00MHz to 45.00MHz

### Features :

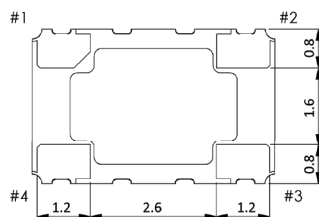
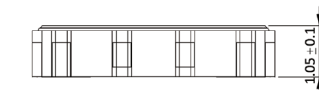
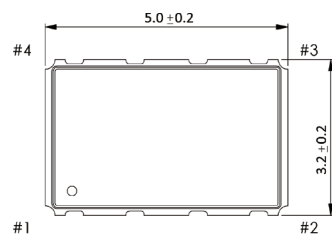
- High precision oscillator unit
- Lead-free type

QUARTZ  
CRYSTALS

### Standard Specifications

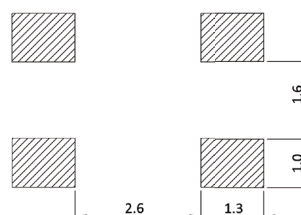
| Item                              | Value                                |              |
|-----------------------------------|--------------------------------------|--------------|
| Frequency Range                   | 6.00MHz to 45.00MHz                  |              |
| Frequency Tolerance at 25°C       | ±0.5ppm max.                         |              |
| Frequency Stability               | Temperature Range                    | ±2.5ppm max. |
|                                   | Input Voltage Change                 | ±0.2ppm max. |
|                                   | Output Load Change                   | ±0.2ppm max. |
|                                   | Ageing                               | ±1ppm max.   |
| Operating Temperature Range       | -30°C to +75°C                       |              |
| Storage Temperature Range         | -40°C to +85°C                       |              |
| Output                            | Clipped Sine Wave                    |              |
| Output Load                       | 10kOhm // 10pF                       |              |
| Output Level                      | 0.8 Vp-p min.                        |              |
| Input Current                     | 1.5mA max. (6.00MHz to 19.99MHz)     |              |
|                                   | 2mA max. (20.00MHz to 31.99MHz)      |              |
|                                   | 2.5mA max. (32.00MHz to 45.00MHz)    |              |
| Supply Voltage (V <sub>DD</sub> ) | 1.8V, 2.5V, 3.3V                     |              |
| Voltage Control (Optional)        | Control Voltage (Vcon)               | 1.5V±1V      |
|                                   | Frequency Adjustment                 | ±8ppm min.   |
| SSB Phase Noise                   | -135dBc / Hz, Typical at 1kHz offset |              |

### Dimension



| PIN | CONNECTION      |          |
|-----|-----------------|----------|
|     | TCXO            | VC-TCXO  |
| #1  | GND             | Vcontrol |
| #2  | GND             |          |
| #3  | OUTPUT          |          |
| #4  | V <sub>DD</sub> |          |

### Soldering Pattern



Note :

1. Manufacturer reserves the right to change the specification and content of this product for improvement without notification.
2. Custom specification is welcome. Please contact our sales representative for further details.
3. If the crystal is intended for applications which have direct impact on human life and properties, and require a high degree of reliability and safety concerns, customers must provide full information such as but not limit to the application, electrical and reliability specification at the inquiry beginning stage.
4. Customers have to agree to the "Guideline for handling crystal units" and "Standard Terms and Condition of Sales" which is printed this catalog before placing orders to our company or our distributors. There are also unpredictable factors such as applied condition, oscillation margin and etc and customers must check them beforehand. In case of queries, please do not fail to send inquiry to our company before ordering.

Ver 1.1

