



7.0X1.5 Plastic SMD Crystals

■ Holder Type: M6

Frequency Range:

32.00kHz to 100.00kHz

Features:

- High Reliability & Low Cost Unit
- Tight Stability & Extended Temperature Available
- RoHS Compliant
- 260°C Reflow Compatible



Actual Size



■ Standard Specifications

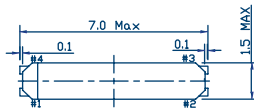
Item	Value	
Frequency Range	32.768kHz	32.0~100.0kHz
Equivalent Series Resistance (ESR)	65kΩ Max	65kΩ to 25kΩ
Frequency Tolerance @ 25 °C	±20ppm, ±50ppm (tighter tolerance also available)	
Temperature Coefficient	-0.034±0.006ppm /°C ²	
Operating Temperature Range	-40 °C to +85 °C (other operating range also available)	
Operable Temperature Range	-55 °C to +125 °C	
Turnover Temperature	25 °C ± 5 °C	
Load Capacitance	7.0pF , 9.0pF , 12.5pF is standard	
Drive Level	0.1μW Typ. (0.5μW Max.)	
Shunt Capacitance	2.5pF Max	
Ageing	±5ppm/year	

Note:

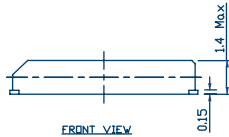
1. Manufacturer reserves the right to change the specification and content of this product for improvement without notification.
2. Custom specification is welcome. Please contact our sales representative for further details.
3. If the crystal is intended for applications which have direct impact on human life and properties, and require a high degree of reliability and safety concerns, customers must provide full information such as but not limit to the application, electrical and reliability specification at the inquiry beginning stage.
4. Customers have to agree to the "Guideline for handling crystal units" and "Standard Terms and Condition of Sales" which is printed this catalog before placing orders to our company or our distributors. There are also unpredictable factors such as applied condition, oscillation margin and etc and customers must check them beforehand. In case of queries, please do not fail to send inquiry to our company before ordering.

Ver.1.2

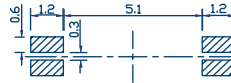
■ Dimensions (mm) and Solder Pad Layout (mm)



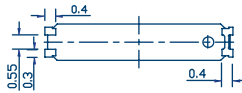
TOP VIEW



FRONT VIEW



RECOMMENDED LAND PATTERN



BOTTOM VIEW



ELECTRODE ARRANGEMENT

MARKING INFORMATION



REMARK: Do not connect #2 and #3 to external circuit or GND (floating)

QUARTZ
CRYSTALS