

MHZ Units

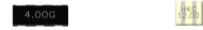
Frequency Range: 1.800MHz~50.000MHz

Features:

- Ultra Compact, Lightweight Design
- Resistance to Damage from Impact and Vibration
- Excellent Temperature Stability (+/-0.3%)
- Frequency Tolerance Up to +/-0.1% per Customer Request
- High Frequency Resonator Up to 50.00MHz



Actual size



Standard Specification

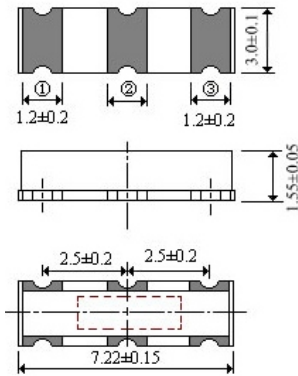
	MG	MT	MX		
Frequency Range	1.80~6.0MHz	6.01~13.0MHz	13.01~20.0MHz	20.01~25.99MHz	26.0~50.0MHz
Frequency Accuracy	±0.5%	±0.5%	±0.5%	±0.5%	±0.5%
Stability in temperature (-20~+80°C)	±0.3%	±0.3%	±0.3%	±0.3%	±0.3%
Operating Temperature	-20~+80°C	-20~+80°C	-20~+80°C	-20~+80°C	-20~+80°C
Aging for Ten Years	±0.3%	±0.3%	±0.3%	±0.3%	±0.3%
Load Capacitance (pF) C1	30	30	30	15	5
Load Capacitance (pF) C2	30	30	30	15	5

Note:

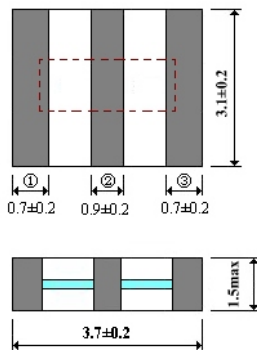
1. Manufacturer reserves the right to change the specification and content of this product for improvement without notification.
2. Custom specification is welcome. Please contact our sales representative for further details.
3. If the crystal is intended for applications which have direct impact on human life and properties, and require a high degree of reliability and safety concerns, customers must provide full information such as but not limit to the application, electrical and reliability specification at the inquiry beginning stage.

Dimensions (mm)

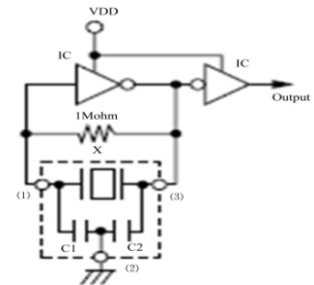
ZTTCC-MG



ZTTCV-MT/MX



Test Circuit



X	Ceramic Resonator
IC	1/6CD4069UBE×2 (MG, MT) 1/6TC74HCU04×2 (MX)
VDD	MG: +5V, MT: +12V, MX: +5V

Please build and send to us your Inquiry Spec Code. You are welcome to add other custom requirement in written and send to us along with the Inquiry Spec. Code. We will reply with a preliminary Product Code.

CR Inquiry Spec Code Builder

C	R	/	8M	/	ZT	/	5	/	5	/	-20+80	/	IND
---	---	---	----	---	----	---	---	---	---	---	--------	---	-----

Type	Frequency (M)	Type	Freq. Tol. At 25 Deg C	Freq. Tol. Over IC Rang	TC Range	Application
eg	3.58M=3.580MHz	eg	5=+/-0.5%	eg	eg	eg
	4M=4.000MHz	AG=ZTA-MG	FALSE	5=+/-0.5%	0-50	CON=Consumer
	16M=16.000MHz	AT=ZTA-MT		3=+/-0.3%	-10+60	CON=Automotive After Market
		AX=ZTA-MX			-10+70	IND=Industrial
		AC=ZTACC-MG	TG=ZTT-MG		-20+80	
		AS=ZTACS-MT	TT=ZTT-MT			
		AM=ZTACS-MX	TX=ZTT-MX			
		VT=ZTACV-MT	CG=ZTTCC-MG			
		VX=ZTACV-MX	ST=ZTTCS-MT			
		WX=ZTACW-MX	SX=ZTTCS-MX			
		B0(zero)=ZTB	ZT=ZTTCV-MT			
			ZX=ZTTCV-MX			
			CX=ZTTCW-MX			
			BY=ZTB-y			